

# High-Performance Powder Coatings from Whitford



**Xylan® industrial powder coatings help solve your coating problems with...**

- Extreme heat resistance
- Chemical resistance
- Low friction
- Hot hardness
- Food contact
- Decorative finishes

**Whitford**

*Manufacturers of the world's largest, most complete line of fluoropolymer coatings*

# Which of Whitford's four lines of Xylan industrial powder coatings fit your needs?

## Xylan® 42P, 43P, 44P, 45P Decorative high-heat coatings

Functional powder coatings designed to provide a highly decorative finish to pieces exposed up to 300°C/575°F. Note: Colours do not yellow after exposure to high temperatures.

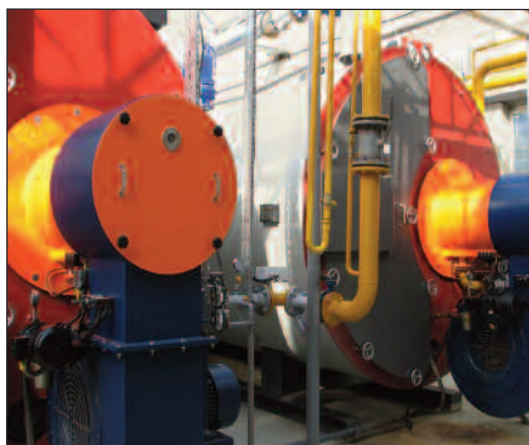


*Xylan decorative coatings perform well on halogen lamps, electrical appliances and fireplaces.*

- **Colour/finish:** Wide range of colours and finishes.
- **Pretreatment:** Degreasing, zinc phosphating or grit blasting.
- **Dry film thickness:** 40 - 60 microns.
- **Temperature resistance:** From 200°C/390°F to 300°C/575°F.

- **Curing temperature:** 200°C/390°F to 235°C/455°F minimum with options to cure at higher temperatures.
- **Decorative uses:** Electrical appliances, boilers, stoves, fireplaces, halogen lamps.

*Xylan powder coatings work well for boilers too.*



*Xylan extremely high-heat powder coatings are designed for use on mufflers, exhaust pipes and engine gaskets for vehicular applications.*

## Xylan 93P, 94P Extremely high-heat coatings

Silicone resin-based powder coatings that withstand high-heat service-temperature exposure up to 540°C/1000°F. Designed for excellent thermal-shock resistance as well as good corrosion resistance.



*Xylan powder coatings are ideal for gaskets and other small mechanical parts.*

- **Colour/finish:** Black, silver, grey. Smooth, satin finish.
- **Pretreatment:** Sandblasting or grit blasting.
- **Dry film thickness:** 40 - 60 microns.
- **Temperature resistance:** 300°C/575°F to 540°C/1000°F.
- **Curing temperature:** 235°C/455°F.
- **High-temperature uses:** Exhausts and mufflers for transportation, generator sets, engine gaskets, stoves, fireplaces, barbecue parts.

## **Xylan 26P** **Food-grade, hot-hardness** **powder coatings**

Powder coatings based on high-heat-resistant resins and extremely tough polymers. These products provide excellent hot hardness as well as chemical inertness and resistance to abrasion — even at elevated temperatures.

- **Colour/finish:** Black, black metallic, silver.
- **Pretreatment:** Sandblasting.
- **Dry film thickness:** 40 - 60 microns.
- **Temperature resistance:** Up to 205°C/400°F (continuous).
- **Curing temperature:** 315°C/600°F.
- **Food-contact uses (FDA and EEC):** kitchen parts, barbecue parts and deep fat fryers.



*Xylan coatings perform well for stoves, grates and fireplaces where high-heat is a concern.*



*Xylan low-friction coatings reduce friction and increase wear-life of garden shears and saw blades.*



## **Xylan 13P** **Low-friction coatings**

These products have an extremely low coefficient of friction, forming a dry coating that creates a moisture barrier as it reduces friction, binding and wear. They also have easy-clean properties.

- **Colour/finish:** Black. Smooth finish.
- **Pretreatment:** Degreasing, zinc phosphating or grit blasting.
- **Dry film thickness:** 20 microns.
- **Temperature resistance:** 200°C/390°F (continuous).
- **Curing temperature:** 260 - 290°C/ 500 - 555°F.
- **Industrial uses:** Mechanical spare parts, blades, saws, garden tools.

## **More on Xylan powder coatings...**

Powder coating is the process of covering a surface with a powdered material (Whitford also makes a full range of liquid coatings).

Powder coating materials are comprised of polymeric resins (and often additives and pigments) reduced to small particles with an average diameter of 25 to 90 microns. The main difference is that powder coatings are applied in the form of free-flowing powders, whereas liquid coatings require water or an organic solvent to keep the resin in suspension.

One great advantage of powder is that it can be applied with almost zero environmental impact. The application processes are essentially mechanical and thermal — there are no VOCs to worry about or wash-down solutions to clean up. And, the application methods are relatively inexpensive.

Whitford has a powder coating for virtually any application. For more information, contact us to help you choose the best powder coating for your particular application or check us out on the web at [whitfordww.com](http://whitfordww.com).



*Xylan powder coatings by Whitford.*



**Whitford also offers a full line of liquid coatings (including decorative exteriors). If we don't have the right coating to solve your problem, we'll develop one that will.**

---

#### **How to contact Whitford**

Whitford manufactures and maintains offices in many countries around the world. For more information, please contact your Whitford representative or the nearest Whitford office (see our website: [whitfordww.com](http://whitfordww.com)) or [sales@whitfordww.com](mailto:sales@whitfordww.com).

*Xylan® is a registered trademark of Whitford.*

# **Whitford**

**Manufacturers of the world's largest, most complete line of fluoropolymer coatings**

NON-WARRANTY: THE INFORMATION PRESENTED IN THIS PUBLICATION IS BASED UPON THE RESEARCH AND EXPERIENCE OF WHITFORD. NO REPRESENTATION OR WARRANTY IS MADE, HOWEVER, CONCERNING THE ACCURACY OR COMPLETENESS OF THE INFORMATION PRESENTED IN THIS PUBLICATION. WHITFORD MAKES NO WARRANTY OR REPRESENTATION OF ANY KIND, EXPRESS OR IMPLIED, INCLUDING WITHOUT LIMITATION ANY WARRANTY OF MERCHANTABILITY OR FITNESS FOR ANY PARTICULAR PURPOSE, AND NO WARRANTY OR REPRESENTATION SHALL BE IMPLIED BY LAW OR OTHERWISE. ANY PRODUCTS SOLD BY WHITFORD ARE NOT WARRANTED AS SUITABLE FOR ANY PARTICULAR PURPOSE TO THE BUYER. THE SUITABILITY OF ANY PRODUCTS FOR ANY PURPOSE PARTICULAR TO THE BUYER IS FOR THE BUYER TO DETERMINE. WHITFORD ASSUMES NO RESPONSIBILITY FOR THE SELECTION OF PRODUCTS SUITABLE TO THE PARTICULAR PURPOSES OF ANY PARTICULAR BUYER. WHITFORD SHALL IN NO EVENT BE LIABLE FOR ANY SPECIAL, INCIDENTAL OR CONSEQUENTIAL DAMAGES.

© Whitford 6/2010